



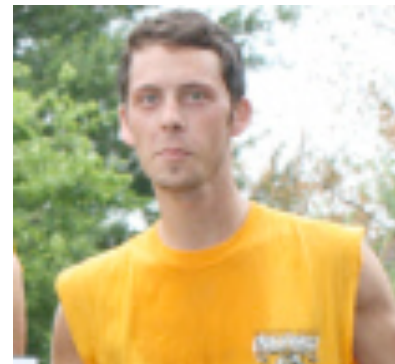
The SWBL is excited to announce our team for the 2nd Annual NWLA National Tournament. The 5-game guaranteed tournament will be held in Columbus, Ohio, July 19th-21st. The SWBL representatives will, once again, be playing under the Cardinals Franchise name in the second year of the tournament. Last season the SWBL finished with a 2-3 record and came home with some valuable experience and some great memories as well. The 2013 Upgraded SWBL Roster for the 2nd Annual NWLA Tournament is as follows:



Patrick Gatti

Patrick Gatti has exploded onto the SWBL scene and showcases a big bat and strong pitching arm. In just his second season in the SWBL, "PG" has shown he can play with the best of them. Gatti attended this tournament last year where he continued to develop as a player. This season, Patrick finished in the top 10 for Season 11 of the SWBL in HR, RBI, and Hits and won the 2013 Home Run Derby. He will first lead as Captain of the London Tournament Cardinals before heading back to the NWLA Cardinals where he will pitch in his first game of eligibility.

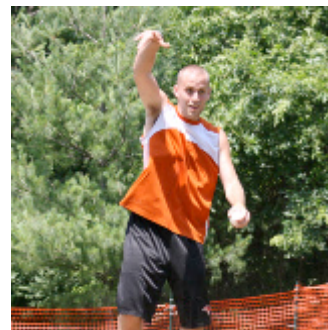
#	Pos.	Bats	Throws
8	P/DH	R	R



Chris Meador

Chris Meador will join the Cardinals squad in his first year attending the tournament, as the only lefty and the only player on the roster to have won an SWBL Championship in the past 3 years. Chris has been the most dominant fielder in our league's history and will man LF when he returns from the London Tournament. Chris won SWBL Gold Glove in 2012 and 2013, while last year being crowned the NWLA Midwest Fielder of the Year. Chris also won the SWBL MVP in 2010 and looks to help make a run in the London and NWLA tournaments.

#	Pos.	Bats	Throws
4	LF	L	R



Gus Skibbe

Gus is excited to join the SWBL team in the 2nd Annual NWLA tournament for his first taste of non-SWBL competitive play. In 9 years of wiffleball, Gus can claim 3 SWBL Championships, the 2011 MVP, 2011 Triple Crown, and the 2006 Gold Glove. He also was included in the top 3 in 2013 for MVP and Gold Glove, finishing in the top 4 in all Triple Crown Categories and Hits. Gus will be a strong addition to the team on both sides of the ball, batting third in the lineup and taking the role as the #2 pitcher during pool play.

#	Pos.	Bats	Throws
18	RF/P	R	R



Sam Skibbe

Commissioner of the SWBL and Captain of the SWBL Cardinals Franchise, this will mark Sam's second trek to the heartland of Ohio and first on the Tournament Host Committee. He has played 10 years in the SWBL, but none as powerful as this past season, leading the league in HR, RBI, and Hits, finishing second in the MVP voting for the 2013 season. His accolades include 8 CY Young Awards, 2009 MVP, 2009 Triple Crown, 2 Gold Gloves, and 3 SWBL Titles. Sam will be the team's utility player; playing any position his team needs him to.

#	Pos.	Bats	Throws
12	OF/P/DH	R	R



Blake Spencer

Two-time MVP (2012, 2013) and the most feared hitter in the SWBL; Blake Spencer will join the NWLA tournament team in his first non-SWBL tournament appearance. In 8 years of wiffleball, Blake's accolades include 2005 Rookie of the Year, 2 MVP Awards, 2012 HR Derby Champ, 1 SWBL Championship, and is 2-2 in Redemption Open tournaments, helping his team win them both. Blake has been the most dominant hitter in the SWBL as of late and will bat fourth in the lineup to hopefully provide some power in this low-contact tournament.

#	Pos.	Bats	Throws
10	OF/DH/P	R	R



Brett Spencer

Co-Founder of the SWBL, Brett Spencer rounds out the SWBL roster in his second NWLA tournament appearance. Brett is arguably the best player in SWBL history, just finishing his 9th season of his career. His accolades include 5 MVP Awards, 2 CY Young Awards (2012, 2013), and he has 3 SWBL Championships to his name. He is also the two-time MVP of the SWBL Redemption Open tournament. Brett will be the Cardinals Ace Pitcher and will be looked upon to get the clutch hit when needed, batting either first or second each game.

#	Pos.	Bats	Throws
13	P/DH	R	R



Since we are also bringing a team to the London Tournament and only 6 players can be on the NWLA rosters, we have two extra players that will be enjoying the rest of their weekend after London, drinking heavily and yelling at our players on the basepaths.

1st Base Coach: Edloe Donnan



3rd Base Coach: Peter Leicht

